

COLLECTION KARMANN



La roue de la vie tourne.
j'ai décidé de me séparer de
plus de 70 années de collection
et de passions Automobile et
diverses !
« L'objet » tant bichonné doit
continuer à vivre entre les
mains de nouveaux passionnés !



Pour fêter le lancement de la
VITRINE INTERNET
de **MES COLLECTIONS**,
je vous offre le
STATUT VIP
jusqu'au 30 juin 2026
Il vous suffit de vous inscrire sur
jcbourseauto.fr

Mise à jour au 6 mai 2026

sous réserve de vente entre temps

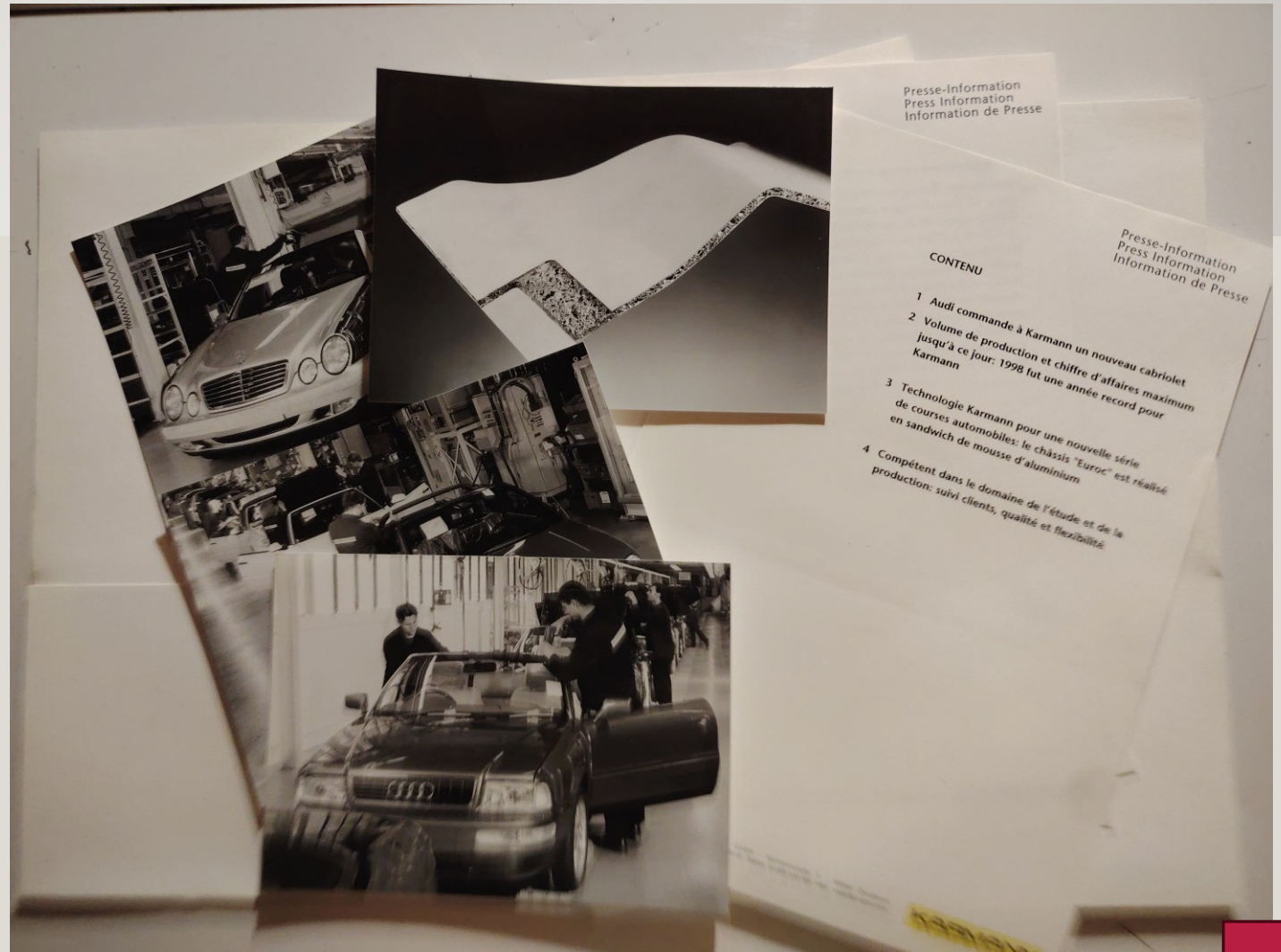
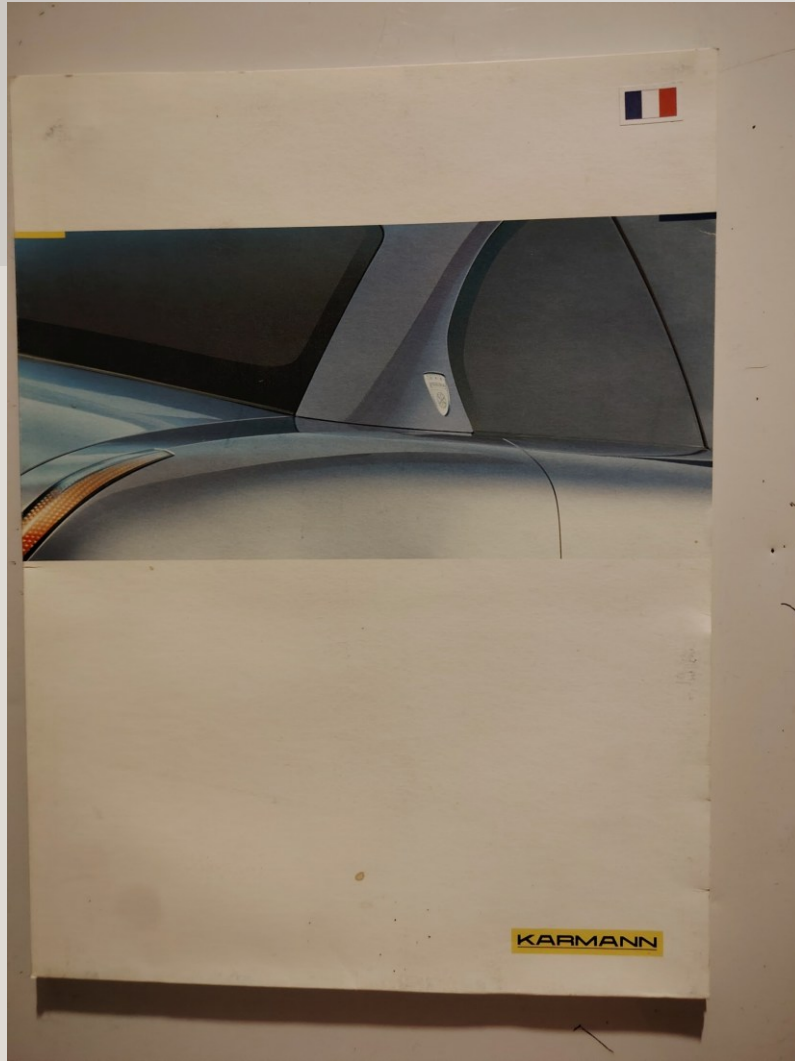
Contact : Jean-Claude ROGER

06 80 28 60 92

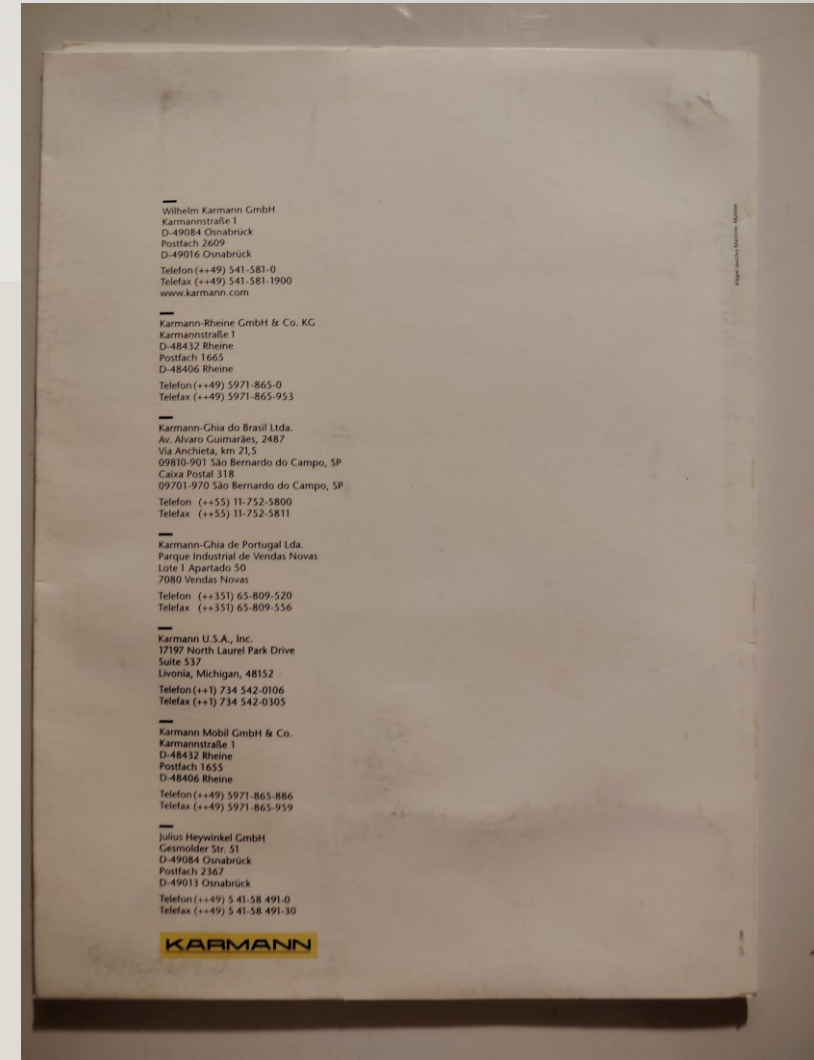
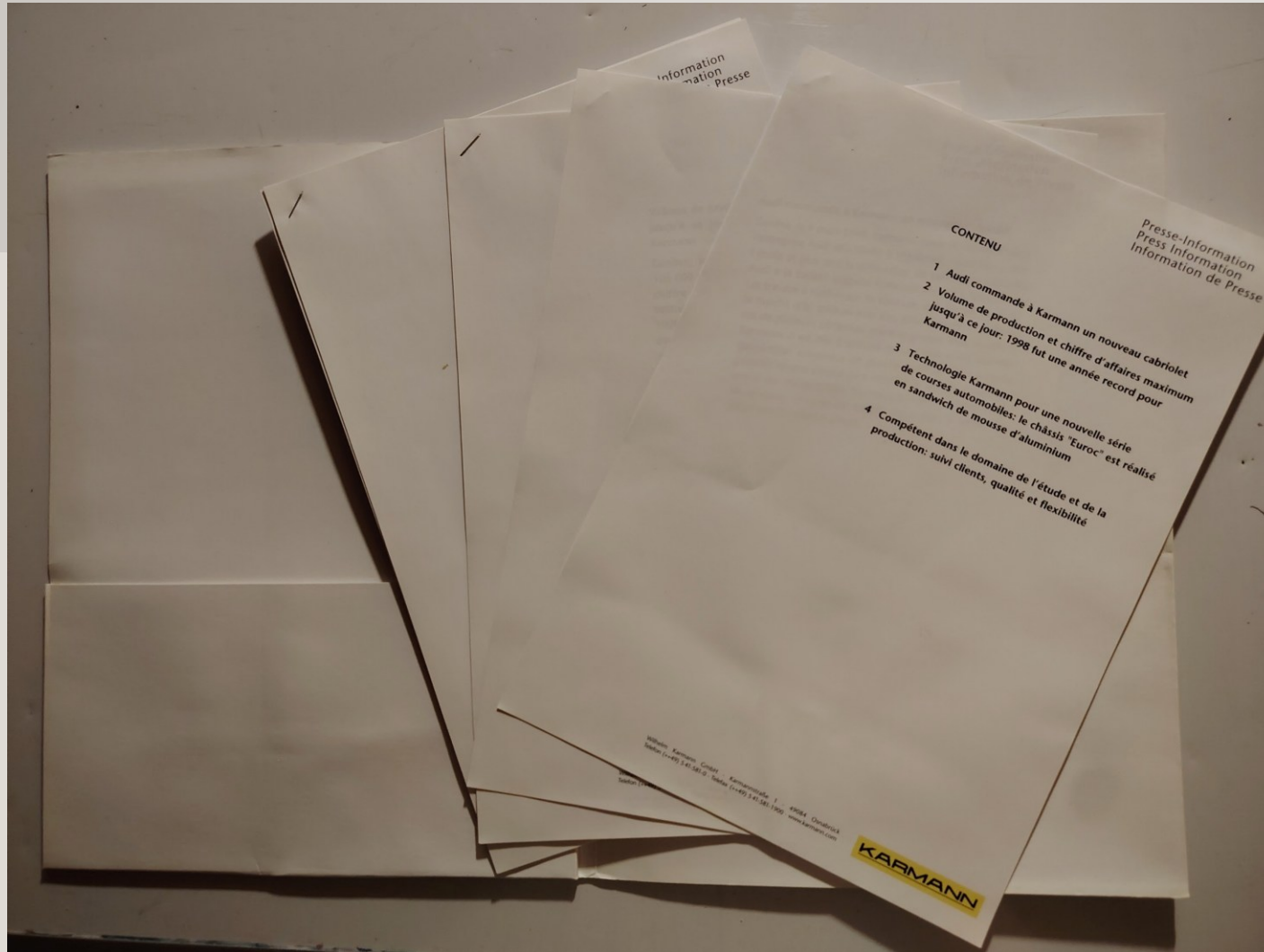
jcbourseauto@gmail.com

www.jcbourseauto.fr

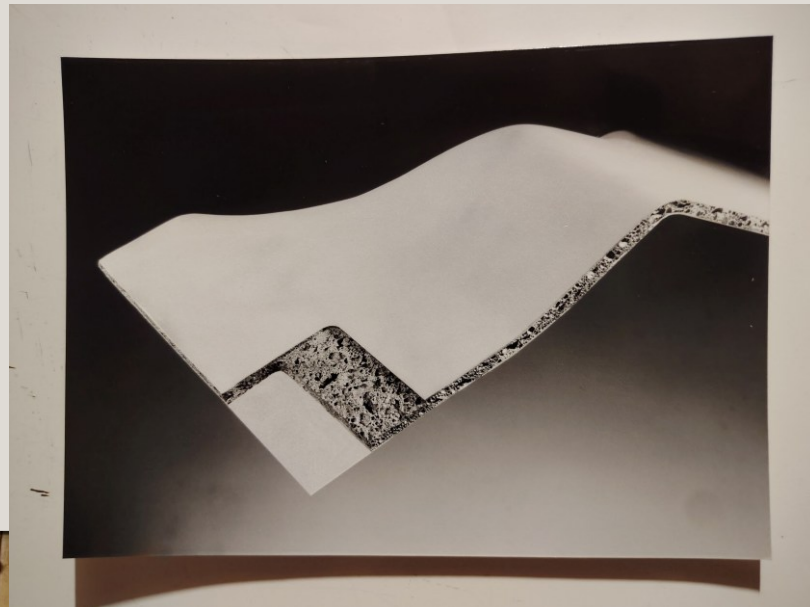
COLLECTION KARMANN - DOSSIER DE PRESSE GENÈVE 1999



COLLECTION KARMANN - DOSSIER DE PRESSE GENÈVE 1999



COLLECTION KARMANN - DOSSIER DE PRESSE GENÈVE 1999



DOSSIER PRESSE KARMANN

1 feuille presse information / contenu

1 feuille presse information : AUDI commande à KARMANN un nouveau cabriolet

1 liasse de 3 feuilles : volume de production et chiffre d'affaires maximum jusqu'à ce jour / 1998 fut une année record par KARMANN

1 liasse de 3 feuilles/ TECHNOLOGIE KARMANN pour une nouvelle série de courses automobiles : le châssis EUROCC est réalisé en sandwich de mousse d'aluminium

1 liasse de 2 feuilles : compétent dans le domaine de l'étude et de la production : suivi clients, qualité et flexibilité

1 jeu de 4 photos noir et blanc 17,7 x 12,8
CABRIOLET CLK de DAIMLER CHRYSLER
GOLF CABRIOLET de VIOLKSWAGEN
CABRIOLET AUDI

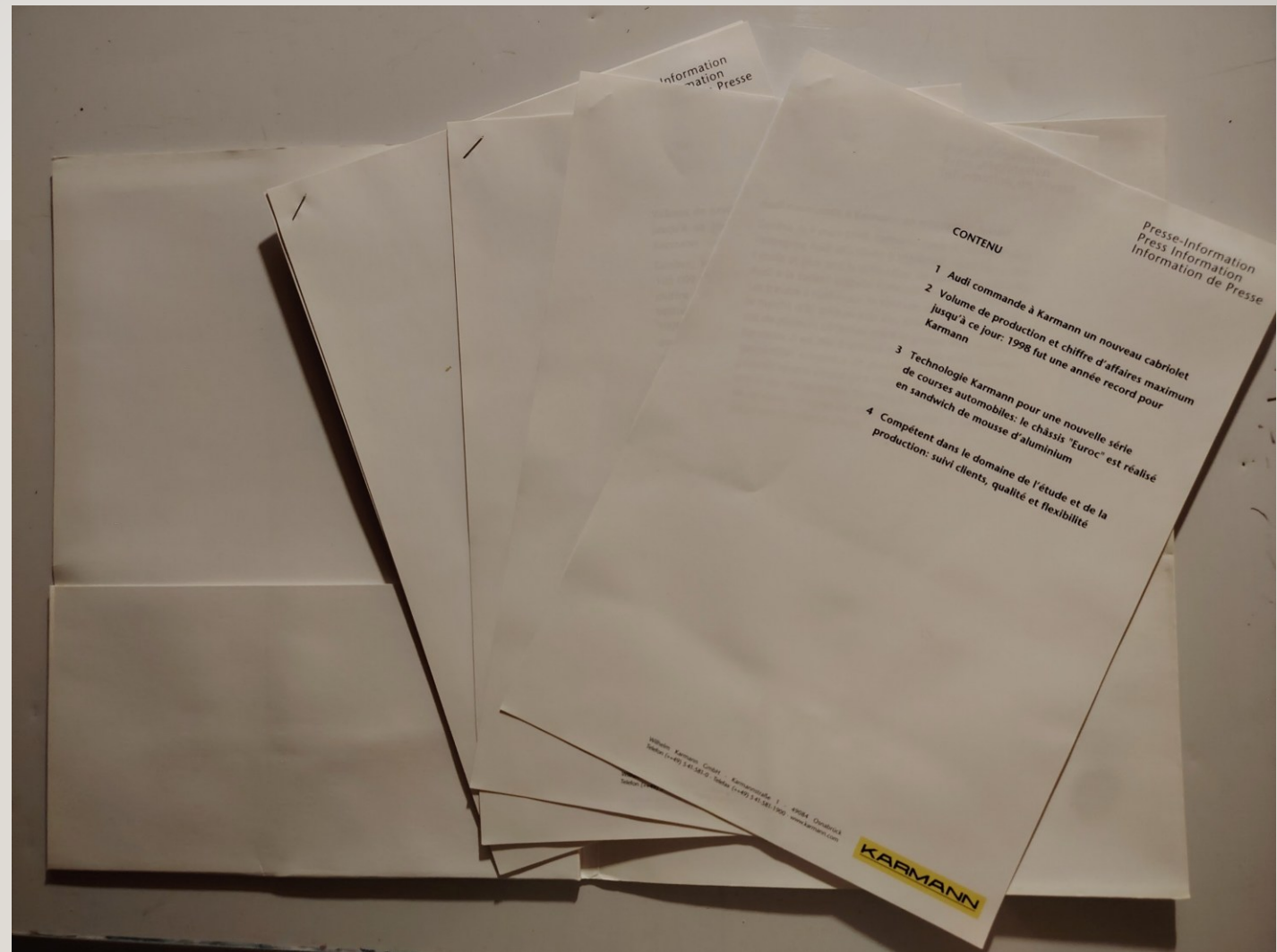
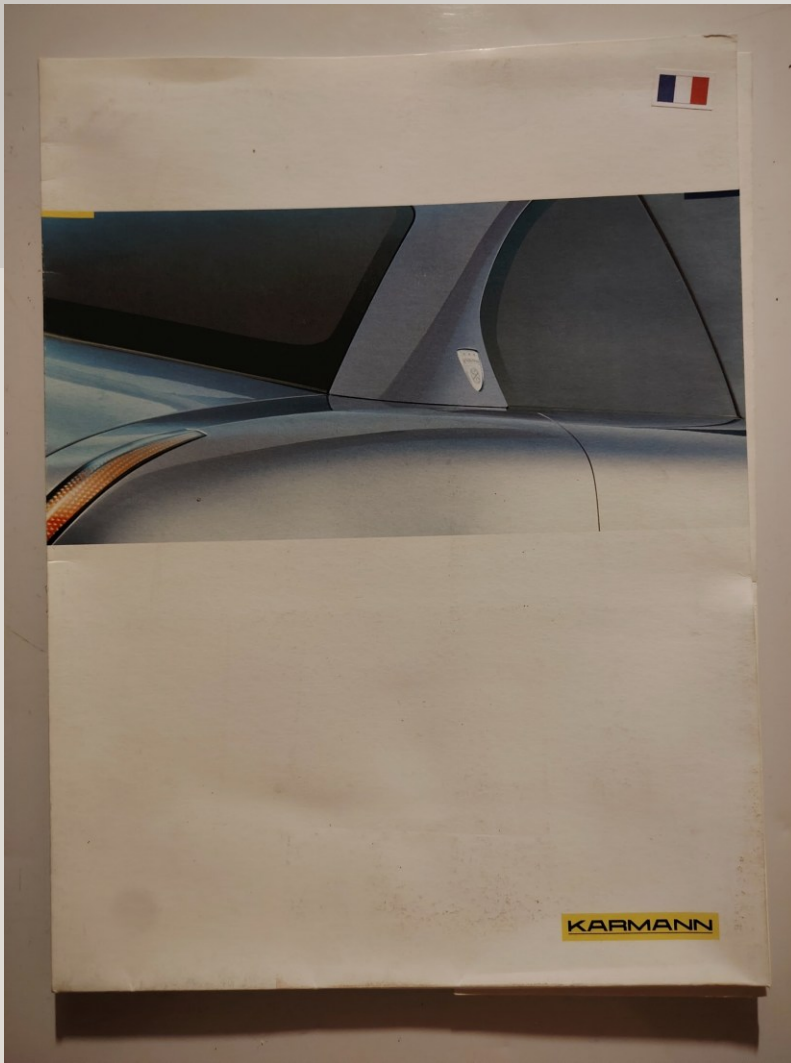
LE NOUVEAU MATÉRIAU « SANDWICH EN MOUSSE D'ALUMINIUM » de KARMANN

Réf DOSSIER DE PRESSE KARMANN GENÈVE 1999

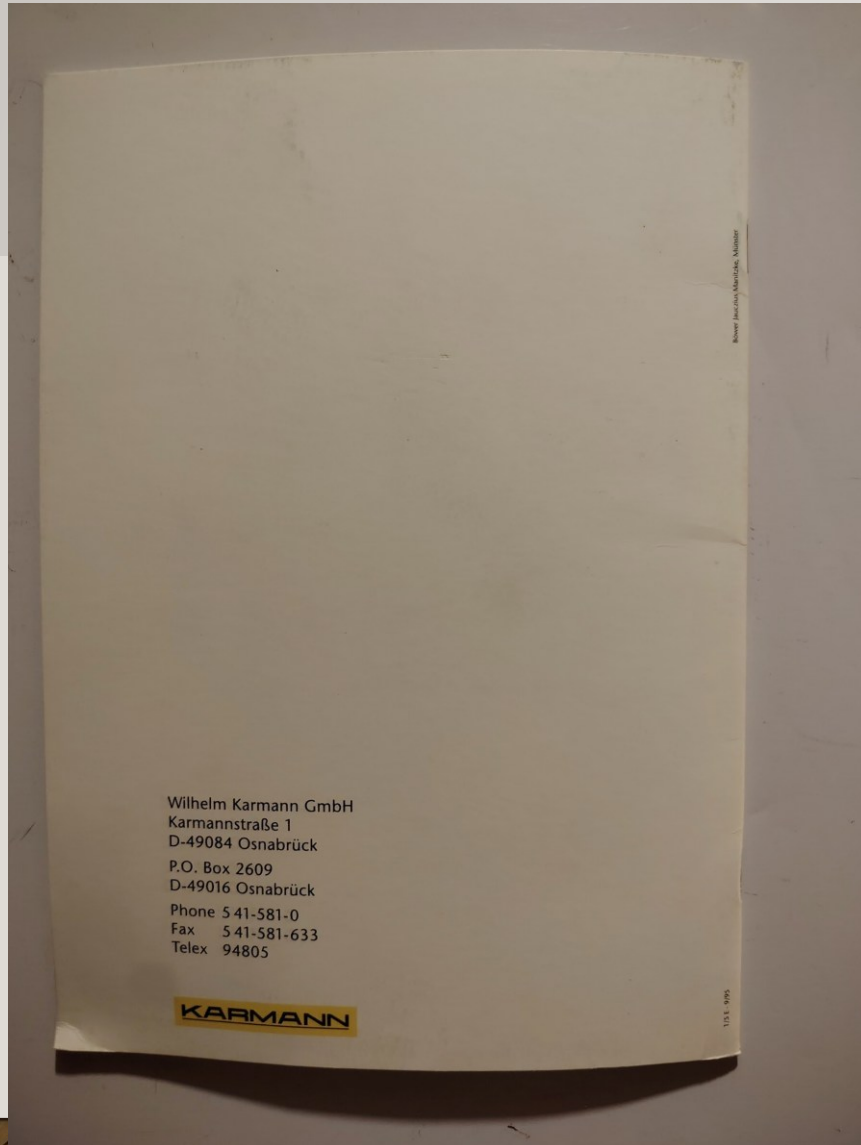
28,00 €

prix VIP 25,00 €

COLLECTION KARMANN - DOSSIER DE PRESSE GENÈVE 1999 sans photos



COLLECTION KARMANN - DOSSIER DE PRESSE GENÈVE 1999 sans photos



Wilhelm Karmann GmbH
Karmannstraße 1
D-49084 Osnabrück
P.O. Box 2609
D-49016 Osnabrück
Phone 5 41-581-0
Fax 5 41-581-633
Telex 94805

KARMANN

11.11.99

DOSSIER PRESSE KARMANN GENÈVE 1999 (sans photos)

- 1 feuille presse information / contenu
- 1 feuille presse information : AUDI commande à KARMANN un nouveau cabriolet
- 1 liasse de 3 feuilles : volume de production et chiffre d'affaires maximum jusqu'à ce jour / 1998 fut une année record par KARMANN
- 1 liasse de 3 feuilles/ TECHNOLOGIE KARMANN pour une nouvelle série de courses automobiles : le châssis EUROCC est réalisé en sandwich de mousse d'aluminium
- 1 liasse de 2 feuilles : compétent dans le domaine de l'étude et de la production : suivi clients, qualité et flexibilité

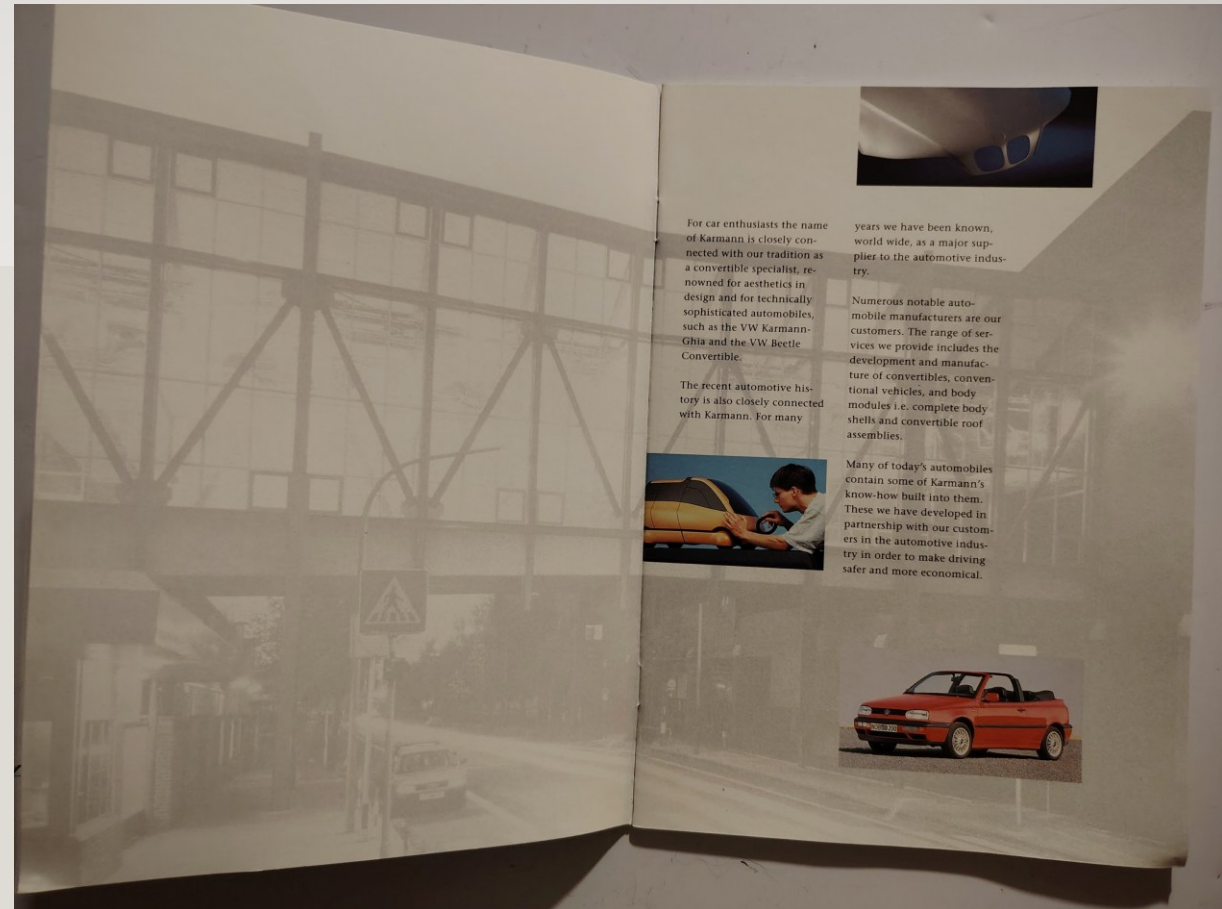
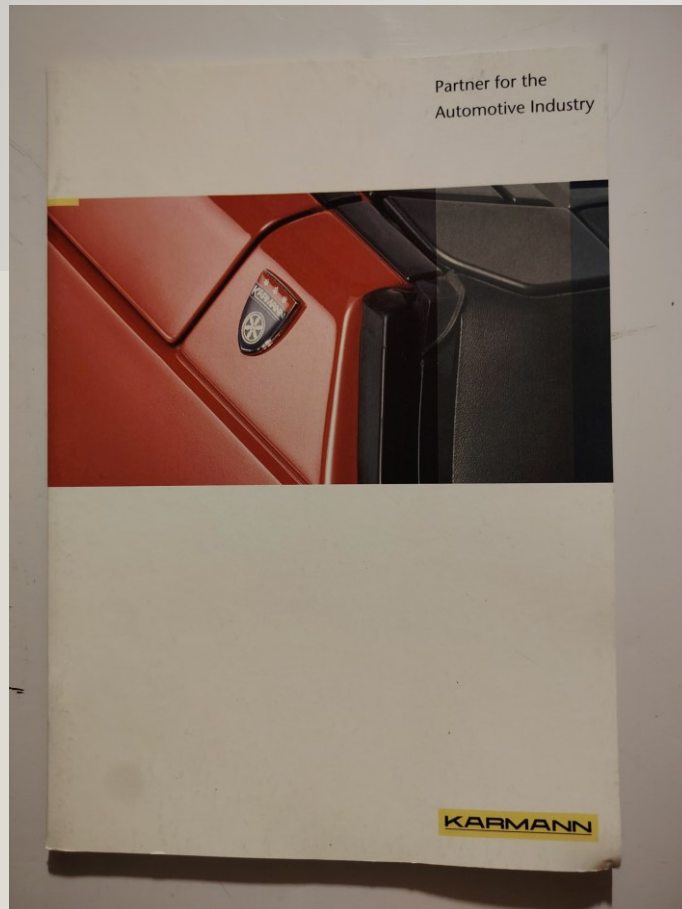
PAS DE PHOTOS

Réf DOSSIER DE PRESSE GENÈVE 99 KARMANN SANS PHOTOS

18,00 €

prix VIP 15,00 €

COLLECTION KARMANN



COLLECTION KARMANN

Partner for the automotive industry

With facilities in Germany (Osnabrück and Rheine) and subsidiaries in Brazil and Portugal Karmann is an internationally operating company.

Our technical development, manufacturing engineering, and manufacturing departments offer a wide range of services necessary for automobile manufacturing.

→ Technical development operations center on the design and engineering of automotive bodies.

→ Manufacturing engineering operations focus on the planning and construction of metal stamping tools, injection die cast tooling for plastics components, and jigs and fixtures for the car assembly.

→ Manufacturing concentrates on the assembly of low-volume production runs, on complete body shells, and subassemblies.

Our specialty remains the convertible. Here the requirements for safety and practicality are the same as for the standard sedan. Therefore modern convertibles require a complete redesign from the underbody upward, naturally without deviating from the original models styling characteristics.

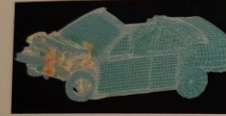


Creativity ...

When a new car enters the market these days, years of intensive planning and development have gone into it. It is expected that a new model is

technically more advanced, safer and more economic than its predecessors. Karmann's technical development department therefore concentrates its expert knowledge on these customer specifications and achieves new styling concepts, efficient assembly designs, and optimized materials.

Our long years of experience are, of course, a valuable resource we can draw upon. But we also rely upon highly developed computer simulation techniques enabling us to decide on technologically and economically critical design factors (i.e. crash characteristics) in the early planning phases of each project.



Prototypes are built before the beginning of the production to acquire reliable operational knowledge for an economically efficient series manufacture. These prototypes, only discernible from a series production car by experts, are subjected to a comprehensive programme of safety and endurance tests.



Only when these tests lead to positive results, when all system requirements have been carefully observed and the overall appearance is within our customer's specifications, the production line is started.



COLLECTION KARMANN

... Economy ...

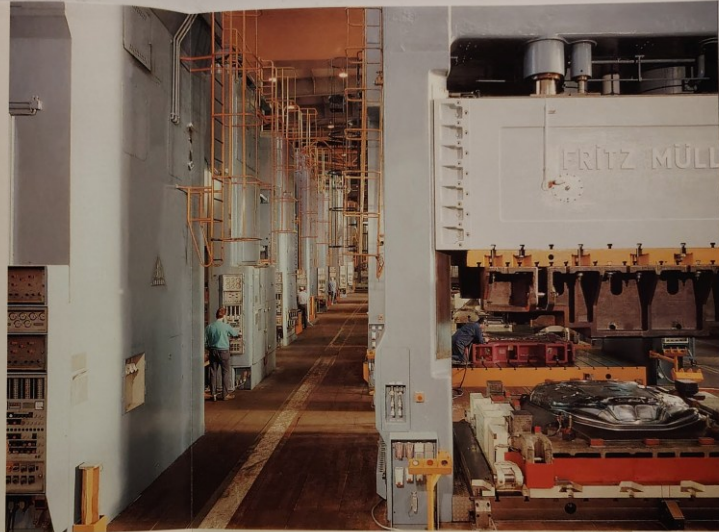
High quality and custom made tooling for stamping, plastics forming, and assembly is required to ensure that the production runs economically and smoothly.



Particularly for high volume production all parts for the body shell or for the interior trim must possess dimensional stability to ensure a continuous assembly quality.

Our manufacturing engineering department plans and develops the tooling needed by our customers from the automotive industry and by Karmann for its in-house manufacture. In accordance with Karmann's tradition and strength as car body supplier we concentrate our efforts on the production of tooling for body shells and interior trim.

For the cost-effective manufacture of such parts the manufacturing engineering department pays particular attention to the efficiency and quality of parts during production runs. Therefore the stamping tools and dies are tested and production certified in our large try-out section before they are delivered.



In modern cars the number of plastics parts increases continuously. Karmann's plastics technology section and tool room develop and manufacture the tooling required for all interior and exterior trim (dash panels, and wheel covers).

Karmann's jigs and fixtures section builds the equipment necessary for the assembly of the body shell and the complete vehicle on the trim and final assembly line.



... Flexibility ...

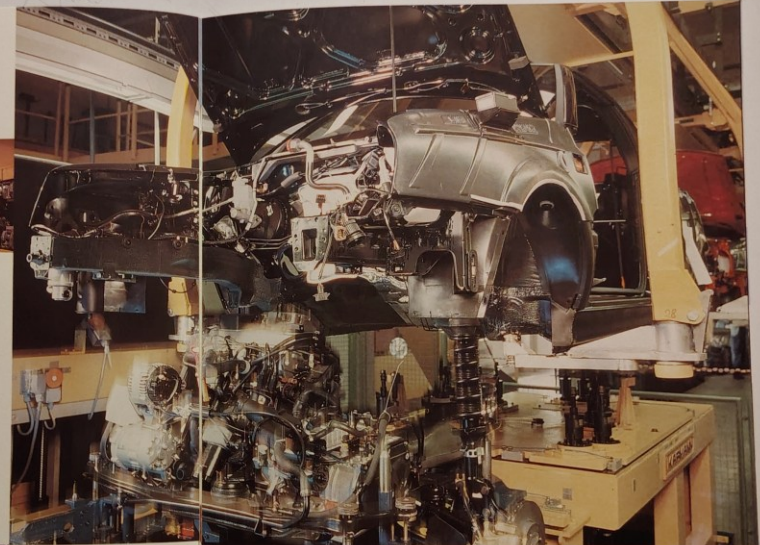
In manufacturing the vehicle takes shape. However, there are considerable differences in the manufacture of high-volume and of niche low-volumes cars. Karmann's entire manufacturing structure provides the highest possible flexibility, achieving a similar economic efficiency for high- and low-volume production.

The high performance stamping plant supplies panels for the automotive industry and for Karmann's own production. Specially equipped press lines facilitate quick tooling changes.

Cost-effective manufacturing principles are also employed in the body assembly process. Our flexible manufacture enables us to assemble a variety of different body shells on one line.



Similarly, on the final assembly line the painted car bodies are built up with customer supplied modules (i.e. power train, chassis), with components from other suppliers, and with interior trim parts and body assemblies produced by Karmann.



A special section within the manufacturing department is dedicated to the manufacture of convertible roof systems. Based on many years of experience and thorough product related research our newly designed convertible

systems provide the comfort and safety qualities common for conventional vehicles.



COLLECTION KARMANN

... and Quality.

Karmann is known for its uncompromising quality standards: all departments and sections from the technical development to the final assembly are involved in continuous measurement and control operations.

For each project the quality specifications and test procedures are scrupulously planned by the technical development department and all stamping tools are production certified.

In the manufacturing department our quality experts are directly integrated into the assembly teams to implement the latest changes without interrupting the production process. Our governing principle is that each individual



worker is personally responsible for the quality of his/her work.

We subject convertibles to a particularly stringent final testing phase, verifying the sealing quality under a variety of conditions.

Karmann's quality assurance system has been rigorously examined, tested and eval-



uated by an independent testing agency. As a result Karmann's quality standards are certified after DIN EN ISO 9000 et sqq. regulations.



The whole and its parts ...

Vehicle manufacture today is a complex industrialised production process.

Karmann has developed a reliable and efficient organizational form to handle the complexity of this process. Our project management ensures that the development, manufacture, and coordination of thousands of individual parts are systematically integrated.

Each project is taken care of by a project manager. He is the person responsible for establishing a project team and for the definition and realisation of work packages. He serves as the customer's interface to the project team and continuously monitors the progress of the project.

Tradition counts ...

The corporate history of Karmann goes all the way back to 1901, when Wilhelm Karmann took over a coach building firm at Osnabrück. The new owner soon realized the impact the automobile would have on his business. Just one year later in 1902, Karmann began to build coaches for automobiles. In the Twenties, Karmann successfully made the change

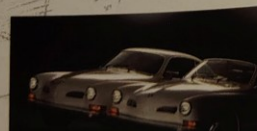
to the building of complete steel auto-body shells. This transition resulted in a rapid growth of Karmann's related engineering and manufacturing capabilities.

After World War II and the reconstruction of the facilities, Karmann began in 1949 to produce the VW Beetle Convertible, the first large after war contract.

Since then, the production of 2.7 million vehicles has established Karmann's distinction as one of the most significant international full service suppliers in the automotive industry. For many globally operating automobile manufacturers such as VW, Ford, Renault, BMW, Mercedes-Benz or KIA we are a reliable partner for development and manufacture.

Prepared for future challenges ...

The automobile is one of the most fascinating and challenging achievements of this century.



More than a hundred years have passed since the early beginnings. In all those years Karmann has been closely connected to automotive development.

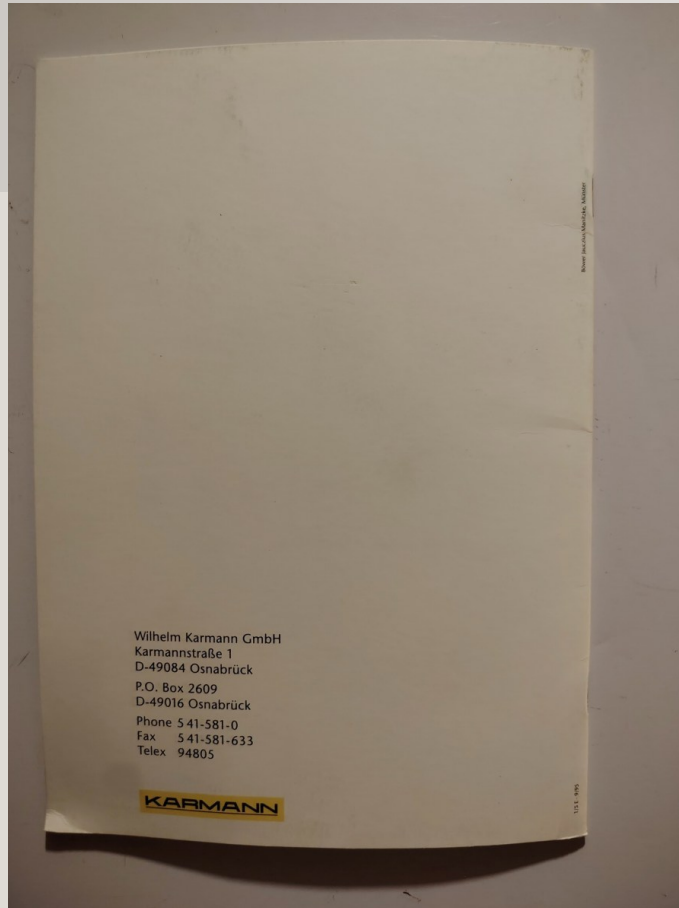
We are confidently looking forward and we are convinced that individual mobility will be of great significance for future ways of life, and that the automobile will continue to contribute to this mobility.

At the same time Karmann will carry on to dedicate its experience and expert knowledge to the improvement of vehicle bodies. Considerable investment during the past few years underline our dedication to the future.

As a full service supplier for the automotive industry and as an esteemed partner for our customers we will endeavour to play our part in the technological and ecological



COLLECTION KARMANN



BELLE BROCHURE KARMANN
Cartonnée 16 pages - état neuf

Photos couleur

Réf BROCHURE CARTONNÉE KARMANN

18,00 €

prix VIP 15,00 €

JC BOURSE AUTO

jcbourseauto@gmail.com
www.jcbourseauto.fr



JC BOURSE AUTO
vente collections personnelles
Recherches personnalisées
Achats individuels et par lots


06 80 28 60 92
Jean-Claude ROGER
créateur dirigeant

jcbourseauto@gmail.com


JC BOURSE AUTO



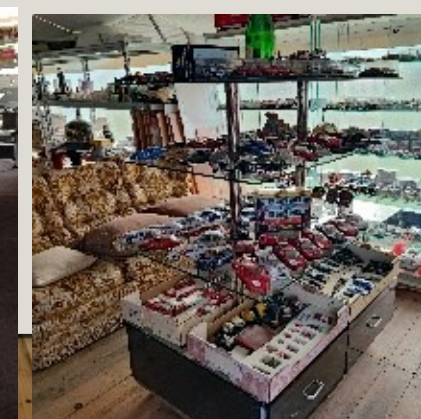
affiches, catalogues, dossiers presse, miniatures, jouets anciens, VENTURI, PEUGEOT, PEUGEOT TALBOT SPORT, toutes marques, matériel, objets



JC BOURSE AUTO
jcbourseauto@gmail.com
06 80 28 60 92



affiches, catalogues, dossiers presse, miniatures, jouets anciens, VENTURI, PEUGEOT, PEUGEOT TALBOT SPORT, toutes marques, matériel, objets



CONDITIONS DE VENTE

Cession de ma collection personnelle de documentation automobile et divers
Plus de 70 ans de collection, cession de mon matériel d'animations événementielles
L'ensemble des prix communiqués s'entend net de taxes, hors frais d'expédition

Les biens sont présentés dans ce catalogue avec un maximum de détails et de photos.

Les dimensions sont approximatives mais très réalistes

Visible en Loire Atlantique (44) : Sur rendez-vous uniquement

MODALITÉS DE RÈGLEMENT

Sur site : en espèces ou chèque (de banque pour plus de 100,00 € sauf accord exceptionnel)

Par internet Règlement total des biens choisis et des frais d'expédition à la commande

Mode : virement ou chèque (idem que ci-dessus) - **WERO** de banque à banque via n° portable
Enlèvement/livraison/expédition des objets après crédit effectif du montant sur le compte

Disponibilité sous réserve de vente entre-temps

Matériel, objets, catalogues, revues d'occasion vendus dans l'état

Frais d'expédition en sus, montant suivant vos achats

Aucun achat ne sera repris ni échangé

Jean-Claude ROGER - 06 80 28 60 92

jcbourseauto@gmail.com www.jcbourseauto.fr

